



WHAT IS THE ARTICULATION BETWEEN RACE GENDER AND CLASS IN THE JUSTICE SYSTEM?

12 February 2010

Cyndi Banks, Professor of Criminology & Criminal Justice,
Northern Arizona University

What are the Points of Articulation?

2 How does racism impact people of color in the criminal justice system?

Police:	Discretionary decision-making leads to high arrests of racial groups
	Racial Profiling
Capital Punishment	Higher chance if murder is black on white rather than black on black
War on Drugs – also called War on Women and War on African Americans	
Incarceration Rates	
Black Women	2 times as likely as Hispanic women to be incarcerated
Black Women	3.5 times as likely as White women to be incarcerated
All women	Up 33% since 2000
American Indians men and women (locally in Flagstaff)	Up to 40% of the jail population

Prisoners & inmates held in custody in state, federal or local jails: BJS Prison Inmates at yearend 2008 BJS

3

Figures	Federal	State	Jail	Territorial prisons	ICE, Military, Jails in Indian Country & Juveniles	Total
1990	65,526	708,393				
1996	105,544	1,077,824				
1997	112,973	1,129,180				
1998	123,041	1,178,978	592,462			1,825,000
2000	145,416	1,236,476	621,149			1,933,503
2002	151,618	1,367,856	665,475			2,033,331
2003	161,673	1,224,652	691,301			2,082,728
2006	190,844	1,302,129	766,010			2,258,983
2007	196,804	1,321,731	780,174	14,678	106, 522	2,419,241
2008	1,517,867		785, 556	13,576	106, 845	2,424,279

Women prisoners as a percentage of all prisoners

1980	4.1%
1990	5.7%
1998	6.5%
2000	6.6%
From midyear 2000 - 2007	14%
2008	6.8%

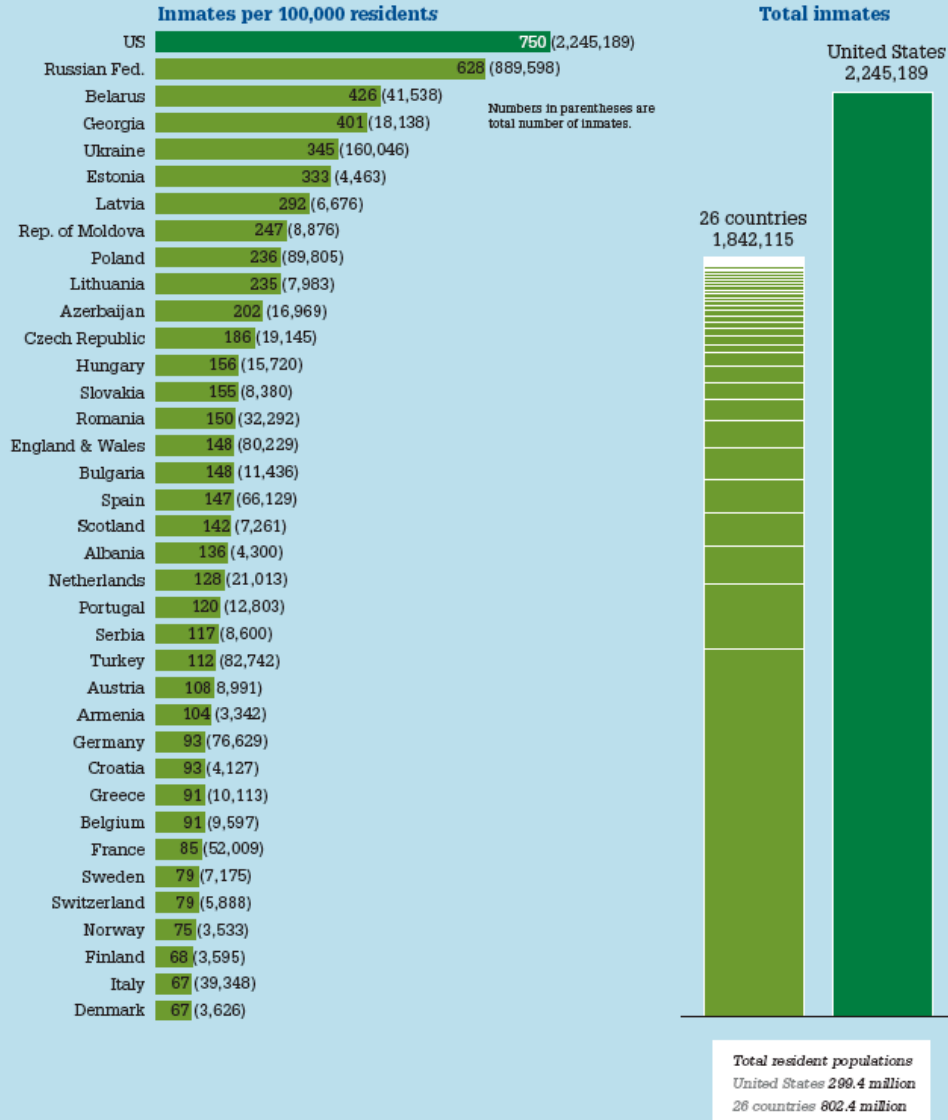
Male Prisoners by race and age (2007)

Males All Men	1 in 106
Hispanic Men (18 or older)	1 in 36
Black Men (18 or older)	1 in 15
Black Men (20 – 34)	1 in 9
All Men (18 or older)	1 in 54

TABLE A-7

INTERNATIONAL COMPARISONS

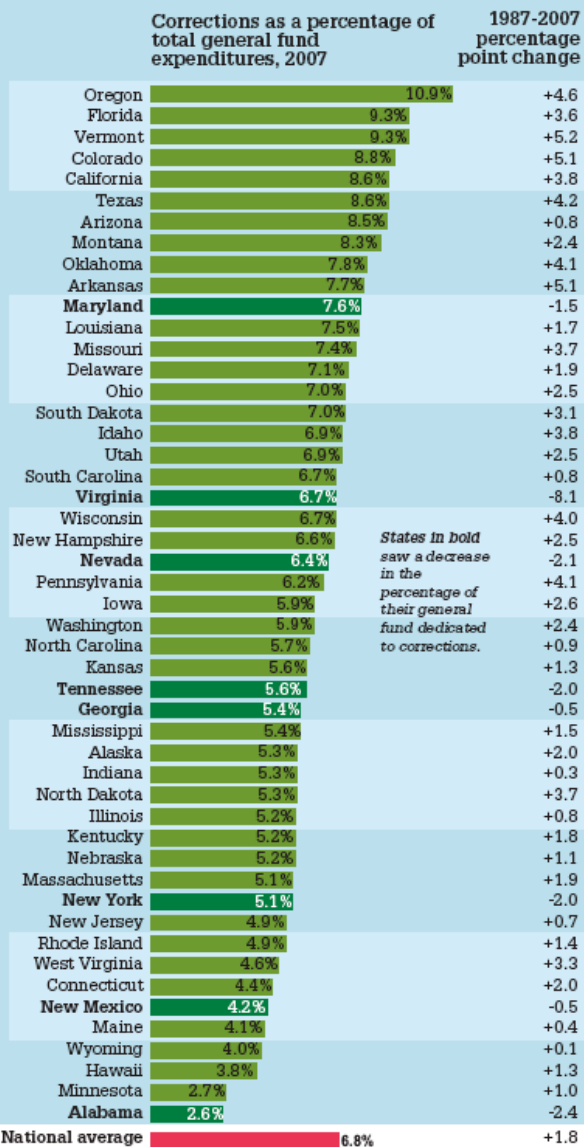
The U.S. inmate population compared to the 26 largest European inmate populations (years vary).



SOURCE: International Centre for Prison Studies at King's College, London, "World Prison Brief." Data downloaded January 2008.
 NOTE: Rates are for total number of residents, not just adults. Figures in this chart may not align with others due to differences in counting methods.

TAKING A BIGGER CUT

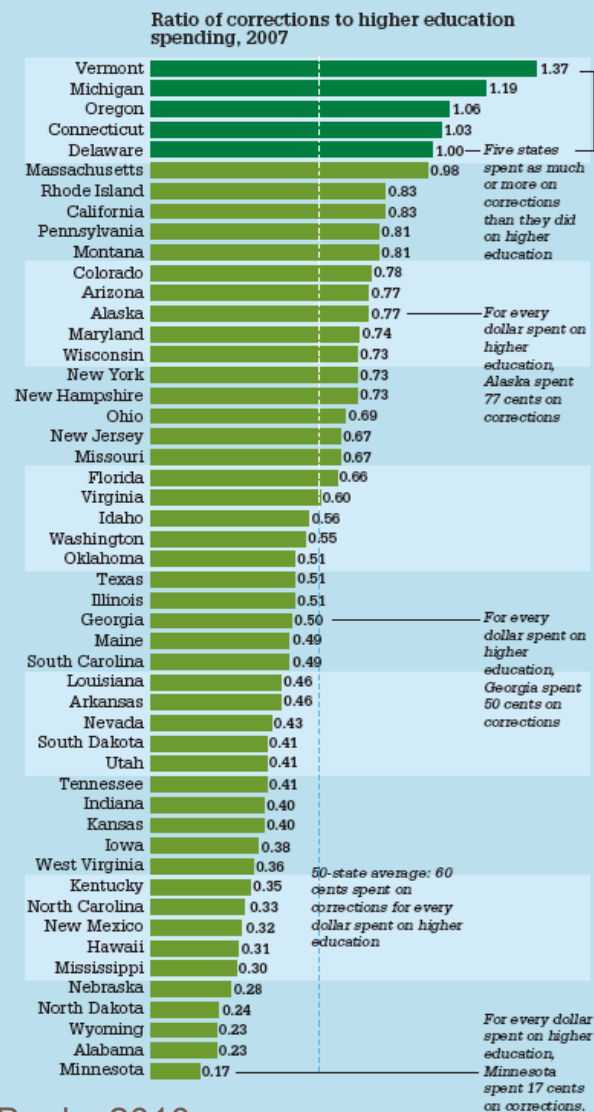
In fiscal year 2007, an estimated 1 in every 15 state general fund dollars was spent on corrections.



SOURCE: National Association of State Budget Officers, "State Expenditure Report" series; Percentage point increases are based on a reanalysis of data in this series.

MAKING DECISIONS WHERE TO SPEND

While states don't necessarily choose between higher education and corrections, a dollar spent in one area is unavailable for another.



SOURCE: Reanalysis of data presented in the National Association of State Budget Officers, "State Expenditure Report" series

Prison Statistics

7 Rate of Incarceration (held in fed, state or local jails)

Year	Rate per 100,000 population
1990	292 per 100,000
1998	461 per 100,000
2000	684 per 100,000
2003	726 per 100,000
2006	751 per 100,000
2007	756 per 100,000
2008	754 per 100,000

1 in 131 adults per 100,000 in prison, jail or state prison

1 in 265 of all women per 100,000

Black women = 349 per 100,000

Hispanic women = 147 per 100,000

White women = 93 per 100,000

CCJ 360 Banks 2010

Race – establish concept

Privilege/Whiteness

Exercises

Privilege exercise

Advertisement as embedded images

Race: The Power of An Illusion – structural embeddedness of race (housing)

Online activities/assignments

Power/Privilege

Starpower Game

Journal Assignments

Privilege/Whiteness

9

GO TO • http://www.pbs.org/race/000_General/000_00-Home.htm for myths and misconceptions raised about race - FOLLOWUP TO FILM IN CLASS

IMPLICIT ASSUMPTIONS

1. Implicit Assumptions: POST your response in Journal 4 under the heading "Implicit Assumptions" Recent scientific research has demonstrated that biases thought to be absent or extinguished remain as "mental residue" in most of us. Studies show people can be consciously committed to egalitarianism, and deliberately work to behave without prejudice, yet still possess hidden negative prejudices or stereotypes. So even though we believe we see and treat people as equals, hidden biases may still influence our perceptions and actions. Psychologists at Harvard, the University of Virginia and the University of Washington created "Project Implicit" to develop Hidden Bias Tests — called Implicit Association Tests, or IATs, in the academic world — to measure unconscious bias.

2. Take three of the tests available at Project Implicit's

<http://implicit.harvard.edu/>) website related to race, sexuality, gender-careers, Natives, skin tone, Arab men, or age and see what may be lingering in your psyche.

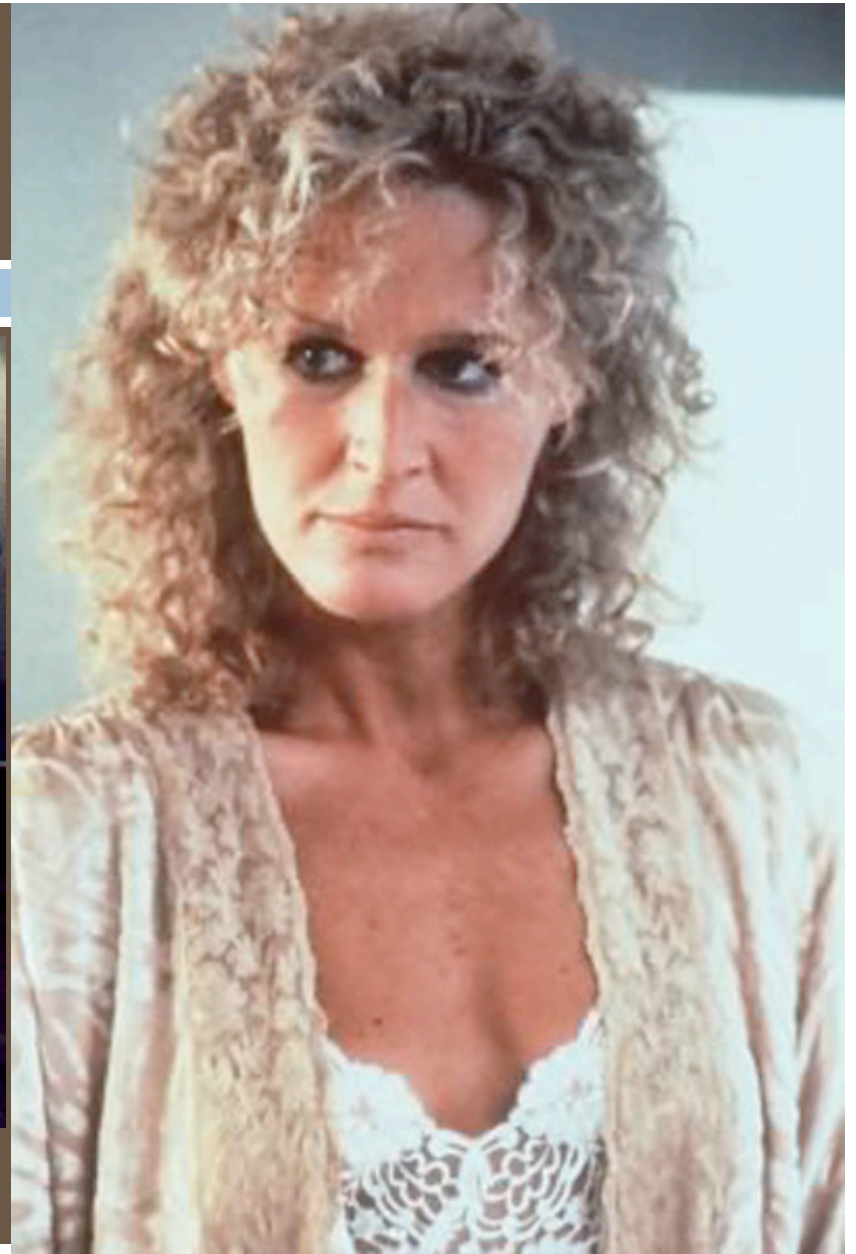
3. After taking three of the demonstration tests and reviewing the results, look through Tolerance.org's website (and in particular the teaching tolerance page for teachers) (http://www.tolerance.org/hidden_bias/tutorials/index.html) to learn more about stereotypes and prejudice and the societal effects of bias.

4. Write and post a paragraph about this experience here under the heading "Implicit Assumptions". Also include one new thing you learned by exploring the Teaching Tolerance website

B. MEDIA ADS AND THEIR MESSAGES. DOWNLOAD: Advertisements as Embedded Images and post your response here under this heading.

C) MEDIA REPRESENTATION: Media portrayals of women and girls. How have media portrayals of women and girls who come into contact with the system changed over the last decade? Provide at least 2 examples (one about girls and one about women) from the readings and offer an explanation for this change. What impact does this new moral panic about women and girls have on them? Please refer to the readings with citations in your journals to show where you are drawing your arguments from.

Media Representation



Women Who Kill their Abusers

Acknowledgements

I would like to thank Angelina Castagno for her willingness to allow me to adapt some of her ideas for exercises.